

Operation of External USB Data Storage/Transfer Capability on the ZOLL® AED Pro®

To transfer internal event data onto an external USB memory stick for storage and/or transfer please follow these steps. (USB Max. 1GB File system: Fat and Allocation unit size to: 16 Kilobytes)

1. Open the AED Pro battery compartment and insert USB key into USB port on right-hand side of the battery compartment. (USB port can swivel allowing USB device to be stored in unit, refer to “Note 2” on page four below, for a description of this feature.)



2. Press and hold the on/off button for 10 seconds to place the AED Pro in “Non-Rescue” Mode.



3. When in “Non-Rescue” Mode select the “USB” softkey (left-hand).

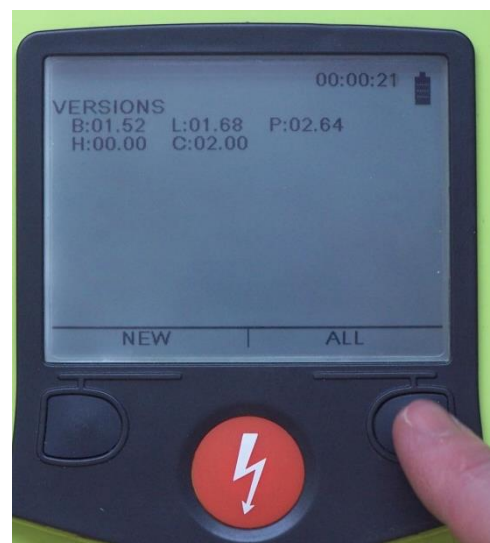
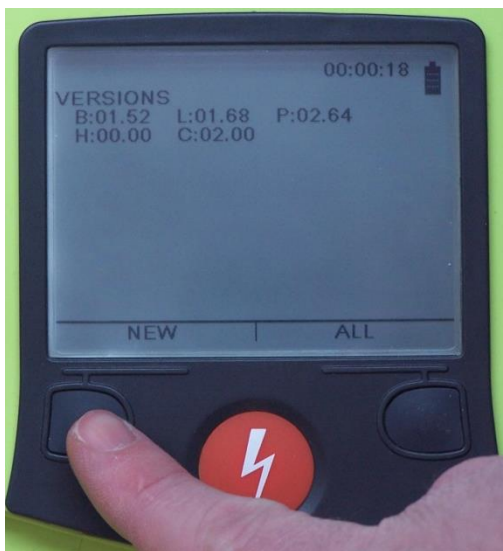
Please note: user can manually set the date/time for the AED Pro by selecting the “SET TIME” softkey (right-hand).



4. Once you select the “USB” softkey you will have two (2) options for data transfer/storage.

a. Selecting the “NEW” softkey will only download event data following the previous USB download from this AED Pro.

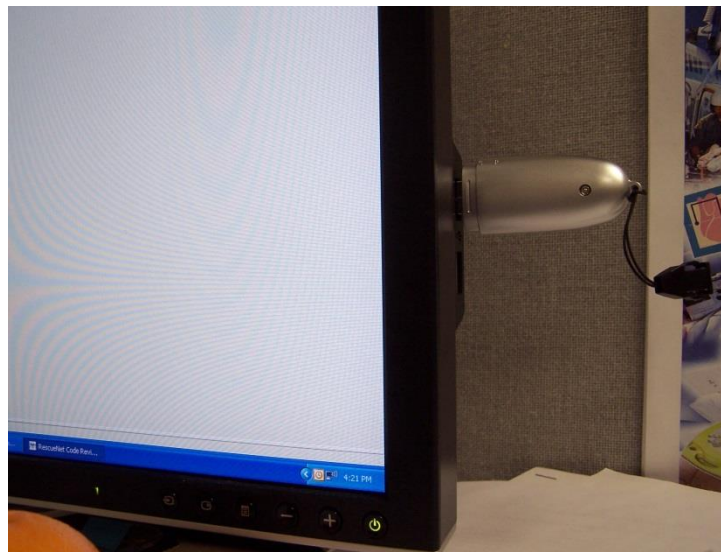
b. Selecting the “ALL” softkey will download all event information stored on the AED Pro.



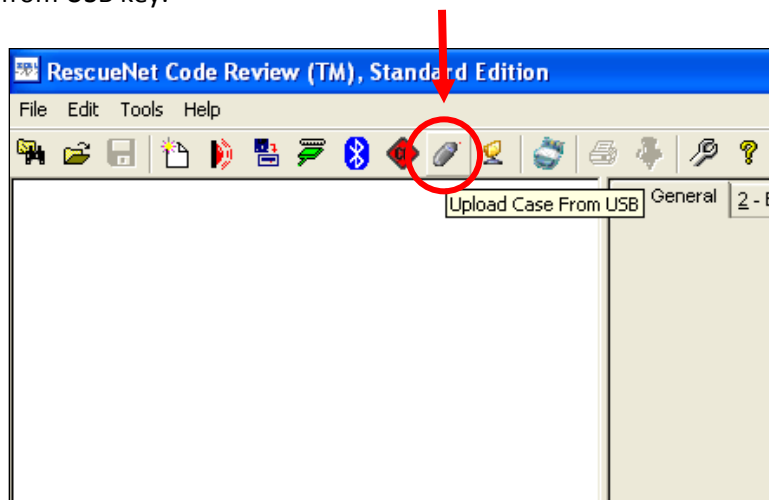
- Once either “NEW” or “ALL” is selected the unit will automatically download desired data onto USB device for storage or transfer.



- To transfer event files from the USB device to a computer, you should first remove the USB key from the AED Pro and then insert it into a USB port on your computer.



- To review event data, open RescueNet® Code Review and then select the USB option to upload event data from USB key.



Note 1: The AED Pro can be configured to store between one and four rescues with its internal memory, for a total of 5.8 hours. The storage period (time) for an event depends on the number of rescues you configure the AED Pro to store. To figure this out, divide 5.8 hrs by the number of rescues you configure the AED Pro to store, to get the period of time stored for each rescue. When configuring an AED Pro, please be aware of your/users desired storage time for individual events. The USB data storage/transfer function allows you to transfer data following a call, allowing longer data storage times for individual events. Please note that if your AED Pro has voice recording, then you are only able to store 1 rescue for a total of 20 minutes internally.

# of Rescues AED Pro is Configured to Record	1	2	3	4
Hours/Rescue	5.8 hrs	2.9 hrs	1.93 hrs	1.45 hrs

Note 2: The user is also able to store a USB key installed in the AED Pro's USB Port with a battery inserted and cover closed. Please note that you can only store a USB key in the AED Pro when using the Non-Rechargeable Lithium or SurePower™ battery packs. The user can transfer event data following steps 2-5 at anytime without the need to remove the battery cover. Due to the size of the SLA battery the user cannot store their USB key in the AED Pro.

